



Universidad Rey Juan Carlos

The University of Manchester



Muséum national d'Histoire naturelle



UNIVERSITAT ROVIRA I VIRGILI

UNI JENA DENKEN ohne GRENZEN



UNIVERSITÀ DEGLI STUDI DI NAPOLI FEDERICO II

## 2nd INTERNATIONAL SEMINAR ON INTEGRATED LANDSCAPE MANAGEMENT

*Introduction: international scenarios and challenges for the recognition of critical areas in Integrated Landscape Management*

Luiz Oosterbeek  
(IPT, ITM, CGeo)



# Rio +20: human divide revealed

Is it possible to set a segregated environmental agenda?

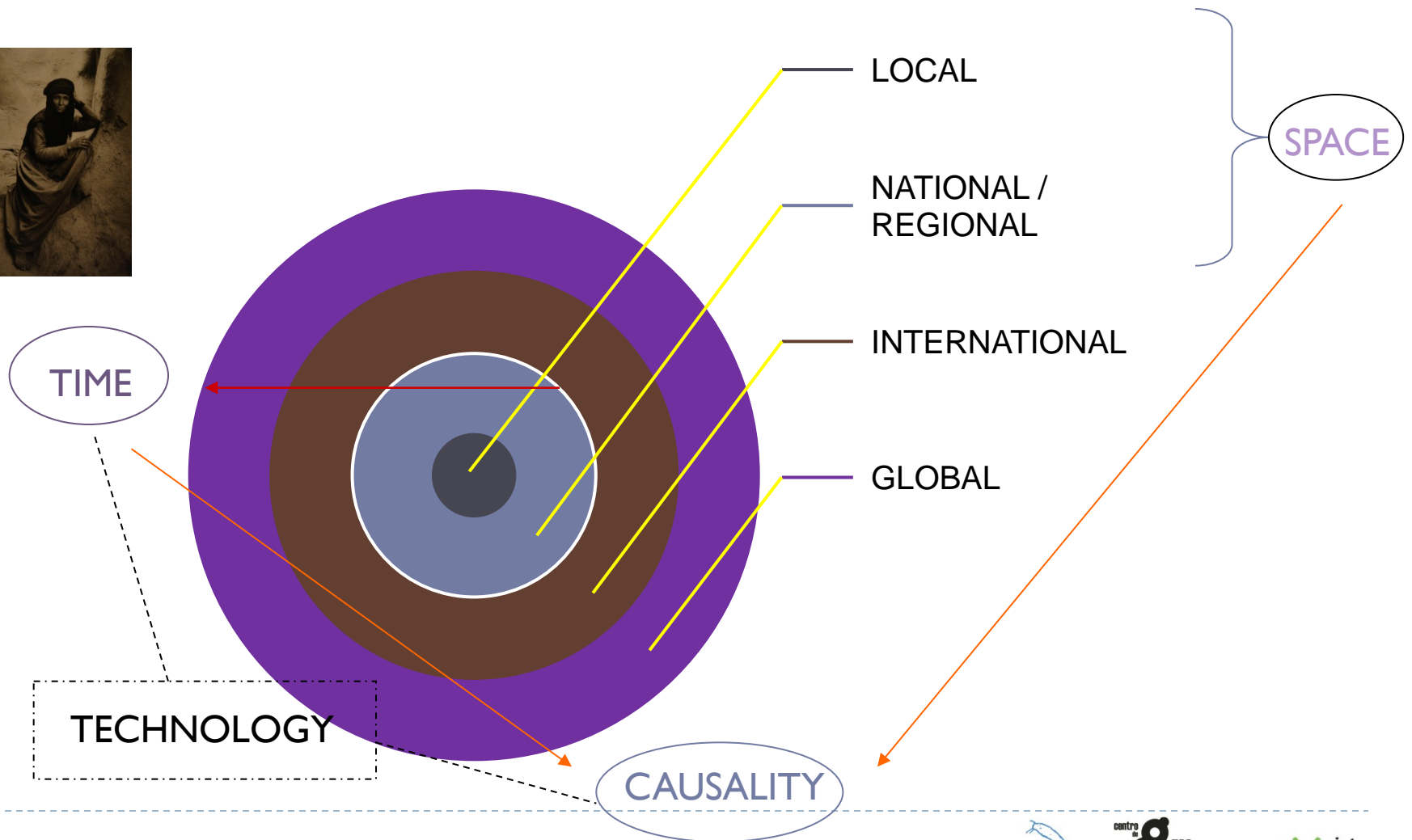
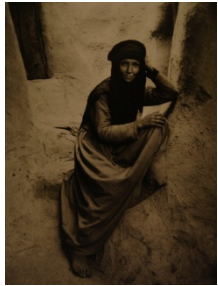
# Two forces and one trend

---

- ▶ Alienation
- ▶ Fear
- ▶ Xenophobia
- ▶ Techniques' bias
- ▶ Great depression
- ▶ Growing knowledge
- ▶ Innovation
- ▶ Integration
- ▶ Critical thinking
- ▶ Long-term reasoning

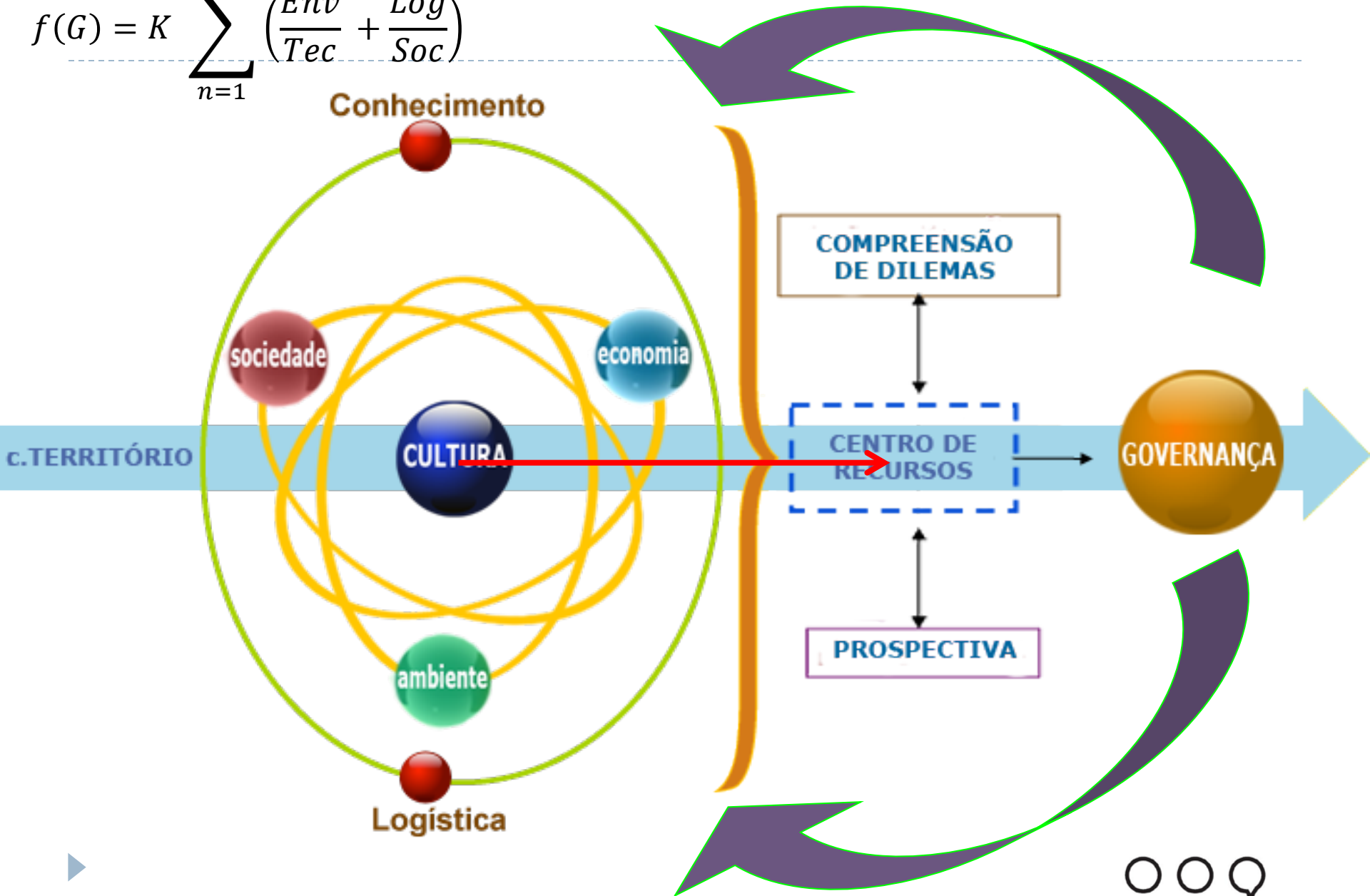


# The problem

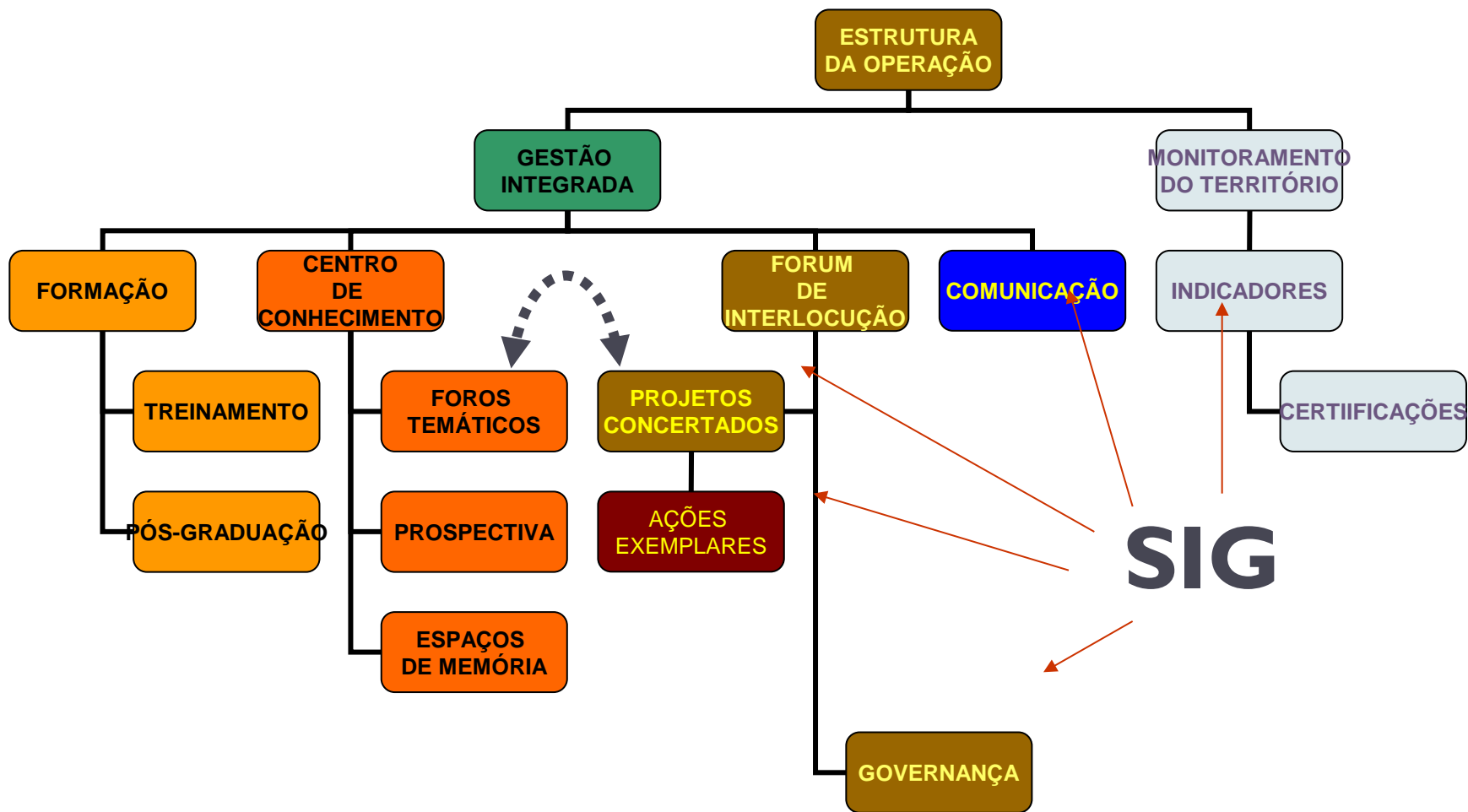


# Socialização do conhecimento e GIT

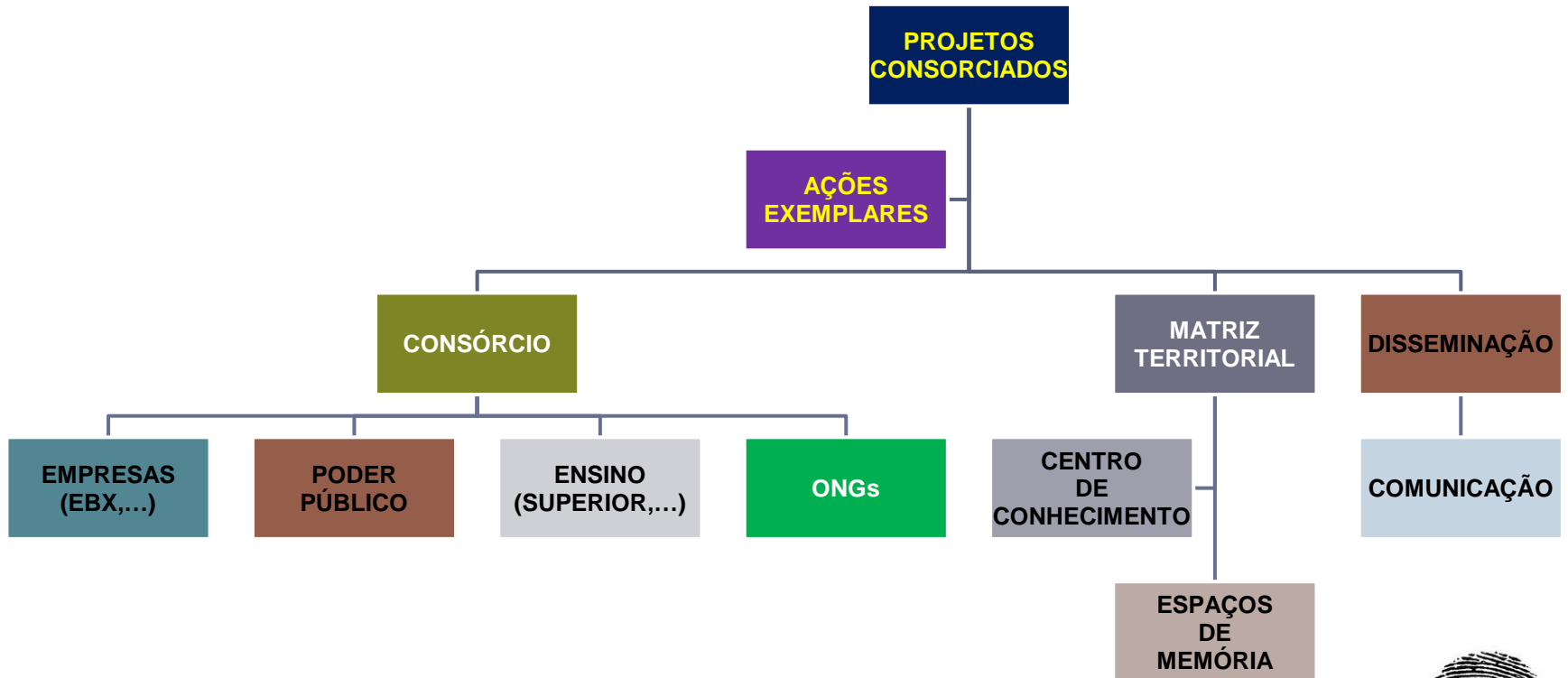
$$f(G) = K \sum_{n=1}^{\infty} \left( \frac{Env}{Tec} + \frac{Log}{Soc} \right)$$



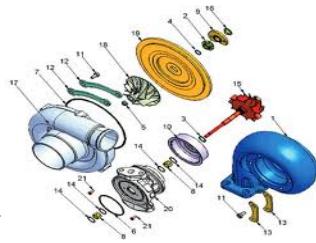
# The ILM framework



# But which projects induce ILM?



**Mobilidade**



**Técnicas**



**Saúde**



**Saneamento**



**Educação e Identidades**

But...can it be done?

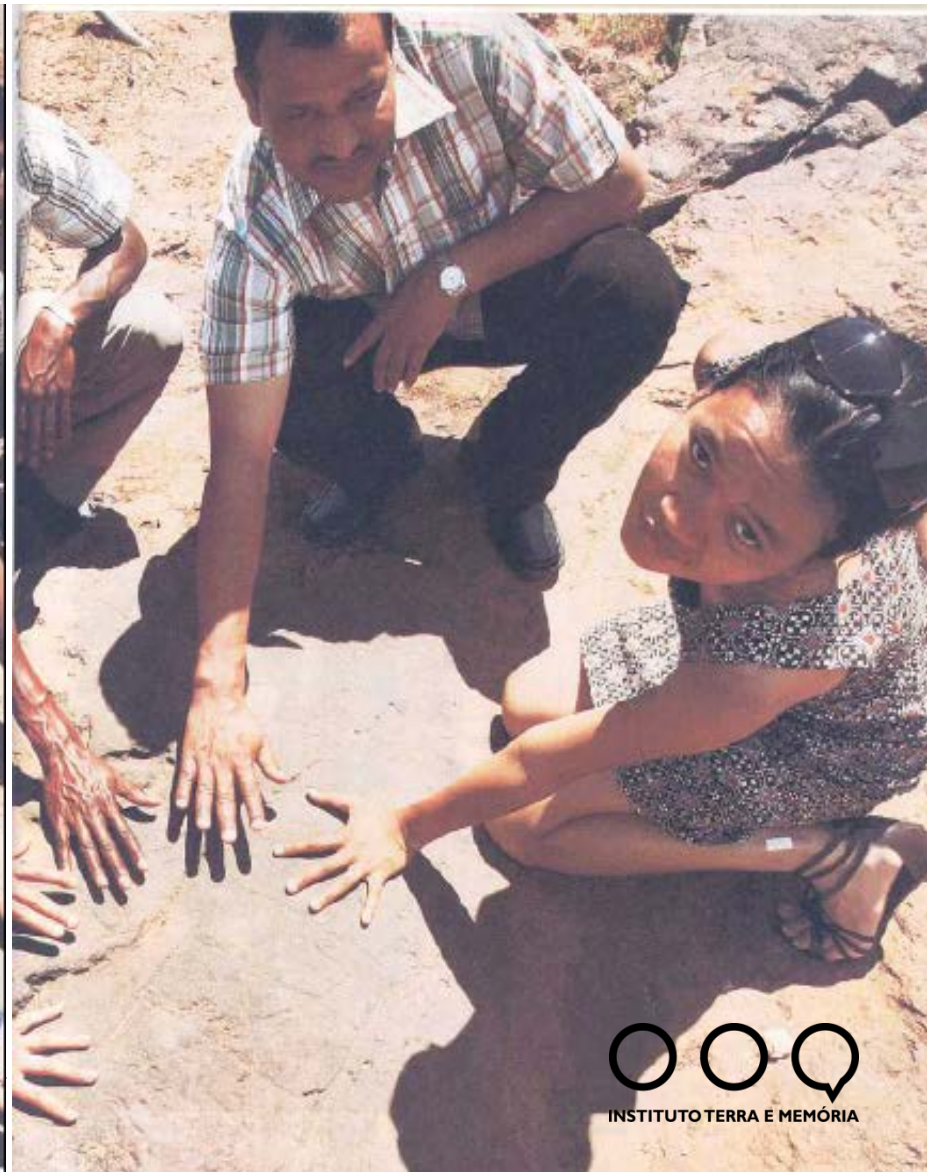
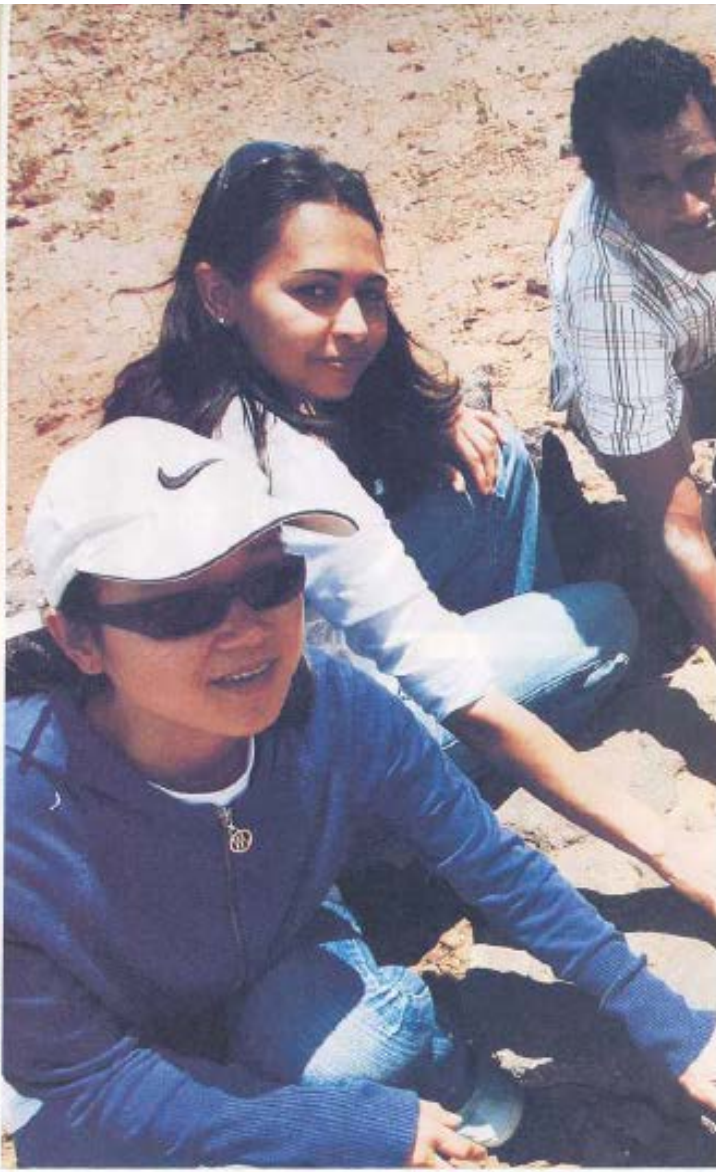


# desertification – knowledge

repositorio de Alexandra, Virgílio Azevedo (textos) e Rui Ochoa (fotos)

**Integrating quality and adaptation:  
archaeology, heritage, education, senior care, risks management, ZIF..**

Vencer



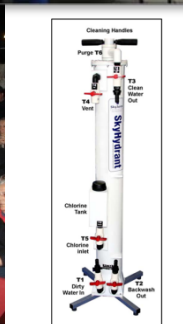
Peng Huijing (China), Tania Yonakita (Brasil), Eddine Soké (Senegal), Manoj Singh (Índia) e Manthi Bakari (Indonésia) junto de povos locais pré-históricos em Colômbia, em diálogo existencial de todo o mundo tiram um momento em Arqueologia em Matiz, colocando essa vila deprimida no mapa de globalização





# Foresight





**NOVOS PARADIGMAS DA SUSTENTABILIDADE**

REFLEXÕES PARA UM CONHECIMENTO TRANSVERSAL DE GESTÃO TERRITORIAL

INGOLBRE SCHEUENMANN (LUIZ DOSTERBEK, PROJ.)

IBIO

**GESTÃO INTEGRADA DO TERRITÓRIO**

EVOLUÇÃO ECONÔMICA, AMBIENTAL E CULTURAL

INGOLBRE SCHEUENMANN (LUIZ DOSTERBEK, PROJ.)

IBIO



# Rio+20 advances

Ensuring a sustainable future in the face of inter-connected, human-induced challenges facing the Earth system urgently requires new knowledge and a new relationship between science and society



We recognize that people are at the centre of sustainable development



# Who looks at what?

---



